

Statement of Commitment

To the best of my ability I will...

- Guarantee that child based programs are established on child development and early education
- Support families in nurturing children
- Admire colleague and encourage them to uphold the Codes of Ethics
- Advocate to the community about children, families, and teachers
- Sustain high standards for professional behavior
- Identify the ways that personal values, opinions, and biases shape professional decisions
- Be open to new ideas and suggestions
- Persist in learning, growing and contributing as an expert

Helpful Resources

NAEYC Website

- <http://www.naeyc.org/about/positions/pseth98.asp>

Better Kid Care Program

- <http://betterkidcare.psu.edu/Angellunits/OneHour/EthicsToChild/EthicsToChildLessonA.html>

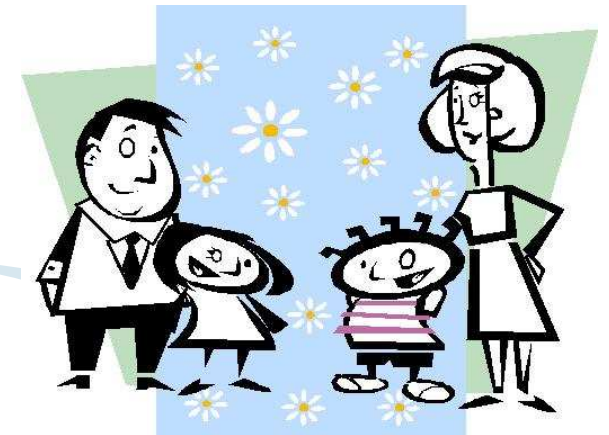
Fundamentals of Early Childhood Education Text

- Morrison, G. S. (2006). NAEYC Code of Ethical Conduct. In *Fundamentals of Early Childhood Education* (pp. 381-387). New Jersey: Pearson.

NAEYC Brochure

- <http://departments.weber.edu/chfam/2610/code.pdf>

NAEYC Code of Ethical Conduct



Responsibilities to Families

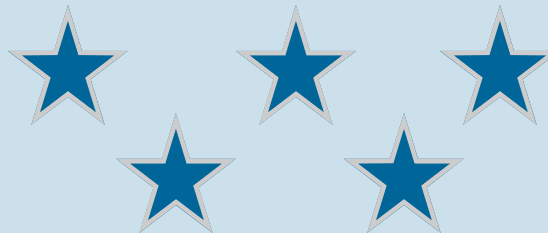
EMILY GALLMEYER

We have committed ourselves to...

- Childhood is a special stage of human development
- Developing curriculum based on child development
- Welcoming support between the child and families
- Children are most valued in the framework of family, culture, community, and society
- Every individual deserve the right to their dignity, worth, and uniqueness
- Assisting children and adults in relationships emphasizing trust, respect, and positive regard

Ideals

- To create relationships of mutual trust
- To further strengths and assets while aiding families in nurturing children
- To respect the dignity of each family and its background
- To respect family decisions of childrearing values
- To explain the child's progress through developmentally appropriate practices
- To help improve understanding of children to enhance parenting skills
- To aid in developing support networks for families by providing them with opportunities to interact with other



We shall...

- NOT deny family access to classroom
- Inform families of all policies and justify our teaching tactics
- Inform and include families in decision including policy and their child
- Inform families of accidents, disease exposure and emotional stress occurrences
- Work with qualified child development researchers. While keeping the rights of families and children
- NOT support exploitation of families
- Develop written policies for confidentiality of records, which will be available to school personnel and families or with consent
- NOT share personal information with others unless there is reason to believe the child's welfare is at risk
- Work with families in turmoil to make informed decisions.
- Be know and appropriately use resources and services that support families