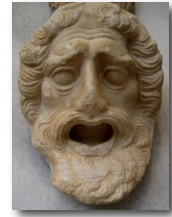


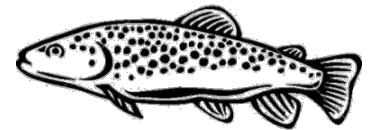
Plato's Crito

Reading a Platonic Dialogue

Dramatic Structure: place, time, characters, plot.



Substantive Issues: the facts of the discipline.



Methodological Issues: strategies for discovering and evaluating the facts of a discipline.



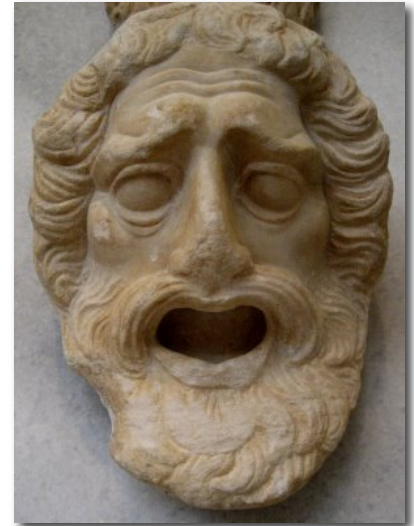
Dramatic Structure

Place: Socrates's prison cell.

Time: The day before Socrates's execution.

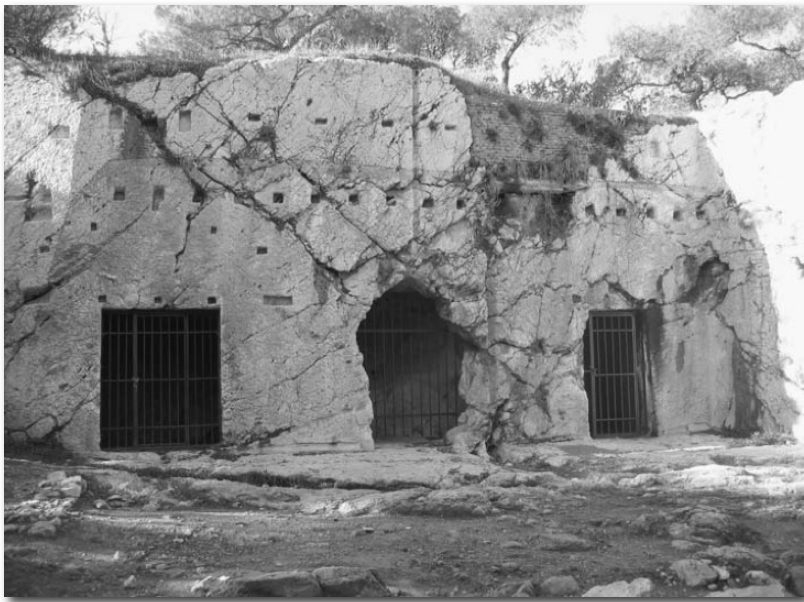
Characters: Socrates and Crito
(an old friend)

Plot: Crito attempts to persuade Socrates to
escape from prison.



From the text...

Why does Crito think that Socrates should avoid execution by escaping from prison?

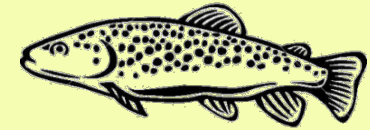


Ancient prison cells in Athens.



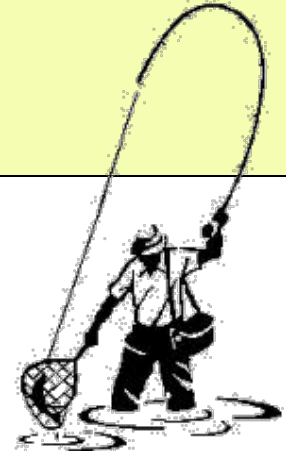
The Death of Socrates (Jacques-Louis David, 1787; oil on canvas, 51 x 77 1/4 in.; New York Metropolitan Museum of Art)

Substantive Issues



- The good is valued above all else (48b, 54b)
- It is better to be harmed than to harm (49b-d)
- Just promises must be kept (49e)
- The State is like a parent (50c-51b)
- “Persuade or obey” (51b-c)

Methodological Issues



- If an argument is ever sound, it is always sound; truth is stable (46b-c, 49b)
- In seeking truth, listen to the experts, not the mob (44c-d, 47a-48b)

King's “Letter”

Martin Luther King, Jr.

(1929-1968)

“Letter from a Birmingham Jail” (April 1963)



An action is civilly disobedient =_{df.}

The action is ...

- (1) Deliberate
- (2) Public
- (3) Non-violent
- (4) Non-revolutionary
- (5) Used as a last resort

Martin Luther King on ...

- (1) Just and Unjust Laws
- (2) The Myth of Time
- (3) Negative and Positive Peace