

Biology-Chemistry and Pre-Pharmacy First Year Advising

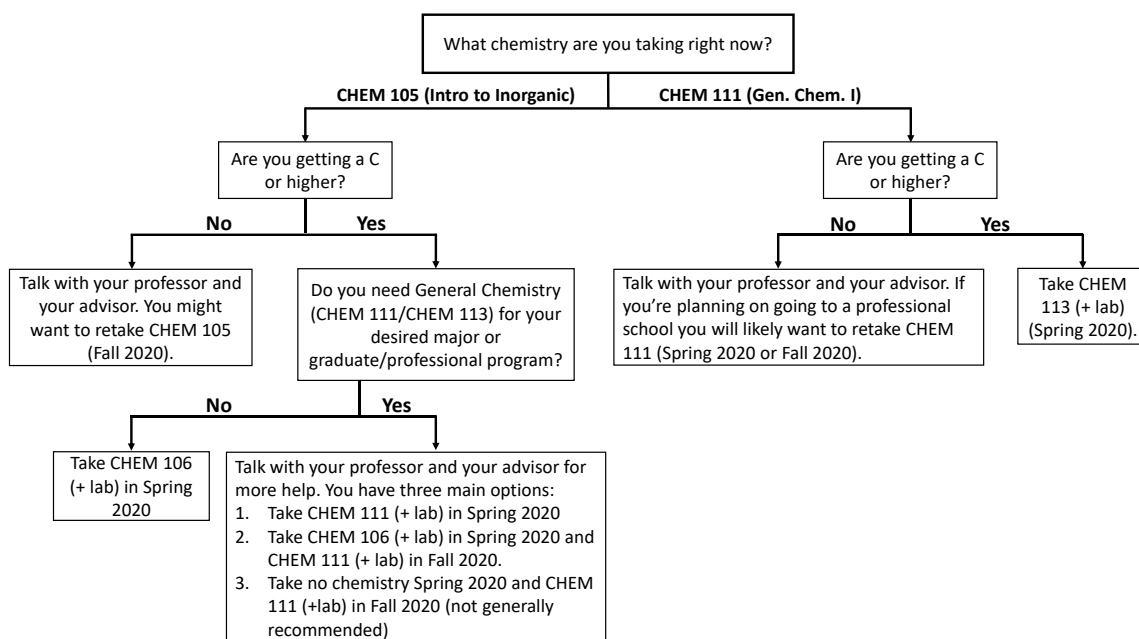
October 2019

1. Chemistry.

What Chemistry Should I Take This Spring?

The Chemistry department is offering CHEM-111 (General Chemistry I) in the spring. The decision tree below will help you choose the appropriate chemistry class for the spring. Here are a couple of other important things that you should also consider:

- 1) Biology-Chemistry and Pre-Pharmacy students need CHEM-111 and CHEM-113 with labs.
- 2) Most professional schools (pharmacy, medical, physician assistant, physical therapy, etc.) want a grade of C or higher for your chemistry courses. If you are not on track to meet this requirement, you should seriously consider retaking your current course, or changing your plans.



2. Biology.

Choose the proper one that matches what you are taking now. The traditional orders are below. Remember that you must also take accompanying labs:

Fall

BIOL-106 Principles of Biology I

BIOL-204 Fund. of Human Phys.

Spring

BIOL-108 Principles of Biology II

BIOL-202 Fund, of Human Anat.

3. Math.

Pre-Calc does not count as core for the BS requirement, but Calculus 1 and Statistical Analysis do.

Pre-Pharmacy needs Calculus 1 and Statistical Analysis (MATH-210) for admission.

Pre-Med and **Pre-Vet** often need Calculus 1 for admission.

4. Core.

Make choices that satisfy both MU Core requirements and professional school admissions requirements. Look for MU Core designations on Registrar's schedule.

Pre-Pharmacy will need courses in economics, communication, one additional social science, two humanities (from religion, philosophy, art, or literature), and one global connection.

Pre-Medicine will need courses in psychology and sociology courses at some point, including Intro to Psychology or Social Psychology, and Intro to Sociology.

Pre-Dental may take any core, although a ceramics/sculpture course and an extra writing course are likely needed at some point.

Pre-Veterinarian may take any core, although an extra literature is likely needed sometime.

Pre-Physician Assistant will need Intro to Psychology and then Developmental Disorders or Behavior Disorders at some point.

Pre-Pharmacogenomics may take any core.

5. *Plan ahead.*

Check admission requirements of ANY school to which you may someday apply.

Shadow a health care professional, if possible, this January and the summer after your first year.

Vary experiences by looking at different types of health care settings, for example compare small vs large practice group.

Record your hours and the contact info for where you work or shadow.

Apply for summer research options if you wish, realizing that your chances will improve with more science classes on your transcript.

Two-year Pre-Pharmacy will begin your application to pharmacy school in late summer this year. You may also take the PCAT this summer. Although MU Pharmacy does not require the PCAT, many other schools do.

6. *Questions.* Any of the Biology-Chemistry Council faculty can answer additional questions: Dr. Jeff Osborne, Dr. Greg Clark, Dr. Aron Costello-Harris, Dr. Cassie Gohn, Dr. Jennifer Robison, Dr. Kyle Watson