

http://www.youtube.com/watch?v=a8CCZJ_dwdI&NR=1

Learners Who are Deaf or Hard of Hearing

Kalie Carlisle, Lauren Nash, and
Allison Gallahan

Definition

Deaf

A deaf person is one whose hearing disability precludes successful processing of linguistic information through audition, with or without a hearing aid

Hard of Hearing

A person who is hard of hearing generally, with the use of a hearing aid, has little hearing sufficient to enable successful processing of linguistic information through audition

Definition and Classification

Children who cannot hear sounds at or above a certain intensity (loudness) level are classified as “deaf”; others with a hearing impairment are considered “hard of hearing”.

Hearing Thresholds Levels

Normal 0 dB (decibals)

Mild 26-40 dB

Moderate 41-55 dB

Moderate severe 56-70 dB

Severe 71-90 dB

Profound 91 dB and above

Classification

Congenitally deaf

Those who are born deaf

Prelingual deaf

Those who become deaf before language is developed

Adventitiously deaf

Those who acquire deafness at some time after birth

Postlingual deaf

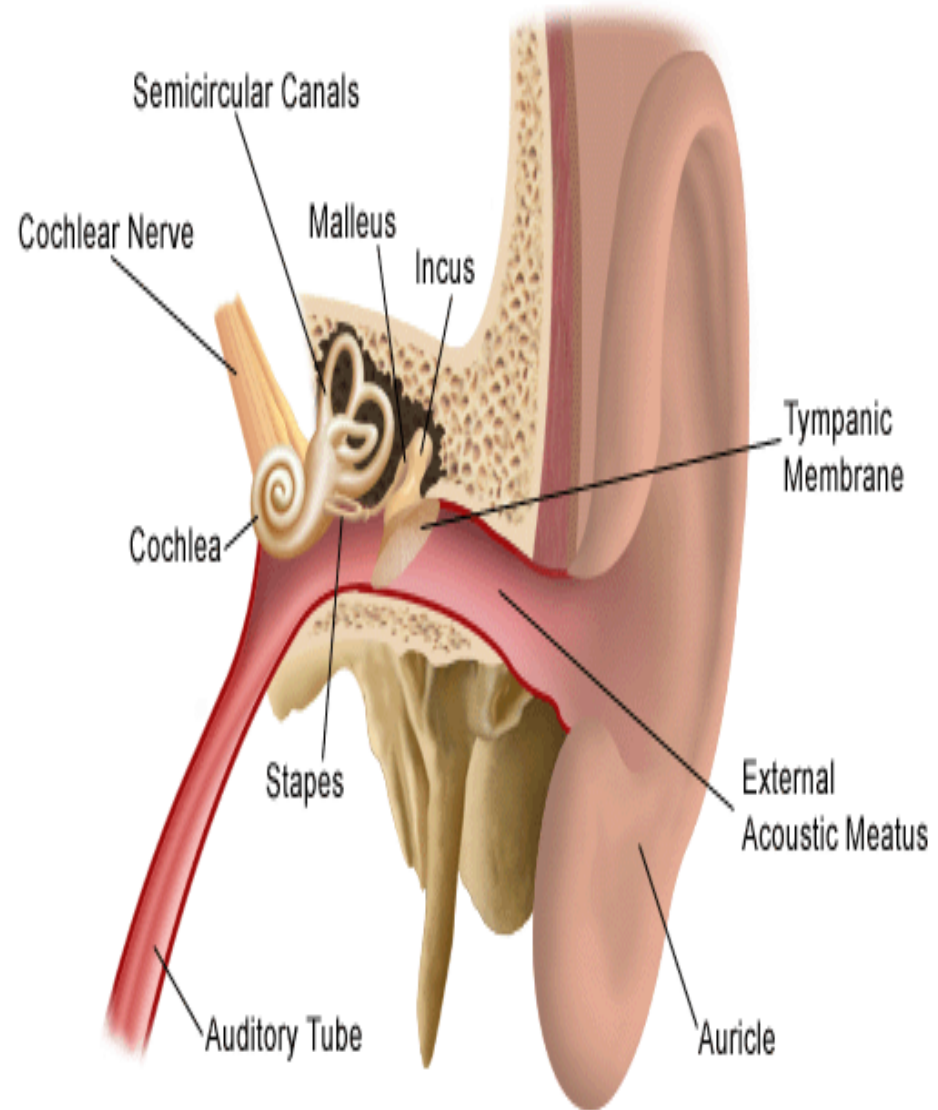
Those who become deaf after language is developed

Prevalence

- 0.13% percent of public school students are deaf or hard of hearing
- 23% of students who are deaf in the United States come from Hispanic-speaking homes

Anatomy and Physiology of Ear

- The Outer Ear
 - Auricle
 - External Auditory Canal
- The Middle Ear
 - Malleus
 - Incus
 - Stapes
 - Oval window
- The Inner Ear
 - Vestibular mechanism
 - Cochlea



Measurements of Hearing Ability

- Screening
 - Different for each age
 - Detection equals more evaluation
- Pure-Tone Audiometry
 - Establishing hearing frequency (dB)
- Speech Audiometry
 - Tests speech understanding not tones
- Specialized
 - Play audiometry
 - Games that test hearing
 - Tympanometry
 - Measures middle ear response
 - Evoked-response audiometry
 - Measures brain wave activity

Causes

Conductive

- Mild
- Interference w/ transfer of sound along pathways of middle/outer ear

Sensorineural

- Severe
- Problems in inner ear

Mixed Hearing impairment

- Combination of Conductive & Sensorineural

Causes

Outer Ear

- Mild
- External otitis: Skin infection (swimmers ear)

Middle Ear

- Hard of Hearing
- Otitis media: Inflammation of mid ear (ear infection)

Inner Ear

- Most Severe
- Heredity or Acquired

Psychological and Behavioral Characteristics

- Spoken & Speech Development

- Most problems w/ comprehension & production of language
- People who become deaf after hearing are at an advantage then those born deaf

- Sign Language

- Complex grammar structure
- Non-Universal
- Easily learned with exposure

Psychological and Behavioral Characteristics

Intellectual Ability

- All achievement tests must take disability into account
- Performance rather than verbal
- No difference in IQ

Academic Achievement

- Demonstrates lack of cooperation in class activities & competition
- Reading ability most important/most effected
- Home support vital for success

Psychological and Behavioral Characteristics

Social Adjustment

- 95% of deaf children have hearing parents
- Least Restrictive Environment
- Deaf Culture
 - Deaf Clubs
 - Cochlear implantation

http://www.youtube.com/watch?v=_X0LP7IUyme&feature=channel

Educational Consideration

- Auditory-Verbal approach
 - Oral approach to teaching students
- Auditory –Oral Approach
 - Relies on amplification technology
- Signing English systems
 - ASL (American Sign Language)

Educational Consideration

- Teacher should face student with hearing loss
- Allow students w/ hearing loss to move in order to see teacher
- Always have visual aids
- Always have good eye contact
 - Talking
 - Writing
- Speak clearly with normal speed

Educational Consideration

- Ask questions frequently
- Only ask one at a time
- Use buddy system for note taking
- Place in least distracting environment
- Interpreter needs to be present during all classes

Creating Visual Instruction

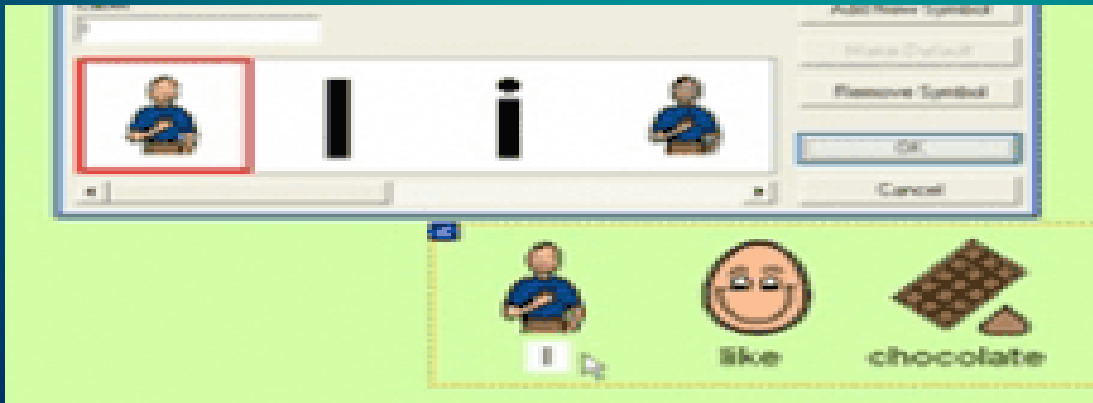
- Use sign or fingerspelling or promote speech reading when instructing.
- Use as many visual supports as possible
- Face students when addressing them
- Use nonverbal cues to emphasize verbal direction
- Avoid note taking
- Repeat questions and answers provided by other students

Activity

- Each student will receive a sentence that they are not to show their partner
- The object of this activity is to communicate with your partner your sentence using non-verbal communication
- Try to come up with different non-verbal communication techniques

Other Ways to Communicate Rather than Verbally

- Sign Language
- Dyna Vox
- Writing on paper
- Texting
- Pointing to things
- Word Chart



Alphabet Chart

A B C D E F G H I J

K L M N O P Q R

S T U V W X Y Z

Word Chart

Yes

No

Restroom

Hungry

Thank
you

Sharpen
Pencil

Kleenex

Thirsty

Tie my
shoe

Help
Me

Hot

Cold

- https://bl2prd0101.exchangelabs.com/owa/redirect.aspx?C=8001279a970b40ff97ac722abbb73ceb&URL=http%3a%2f%2fwww.youtube.com%2fwatch%3fv%3d_X0LP7IUyme%26feature%3dchannel

<http://www.youtube.com/watch?v=RpG8BH1ALJ0&NR=1>